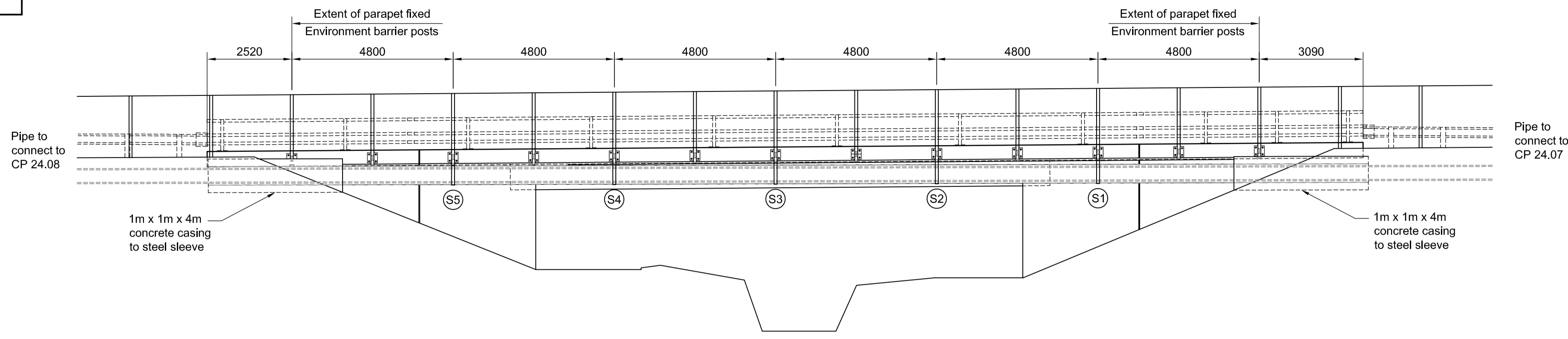


SOUTH ELEVATION		
Strap No. (from E-W)	Dimension A (mm)	Dimension B (mm)
S1	855	286
S2	829	259
S3	802	233
S4	776	207
S5	750	181

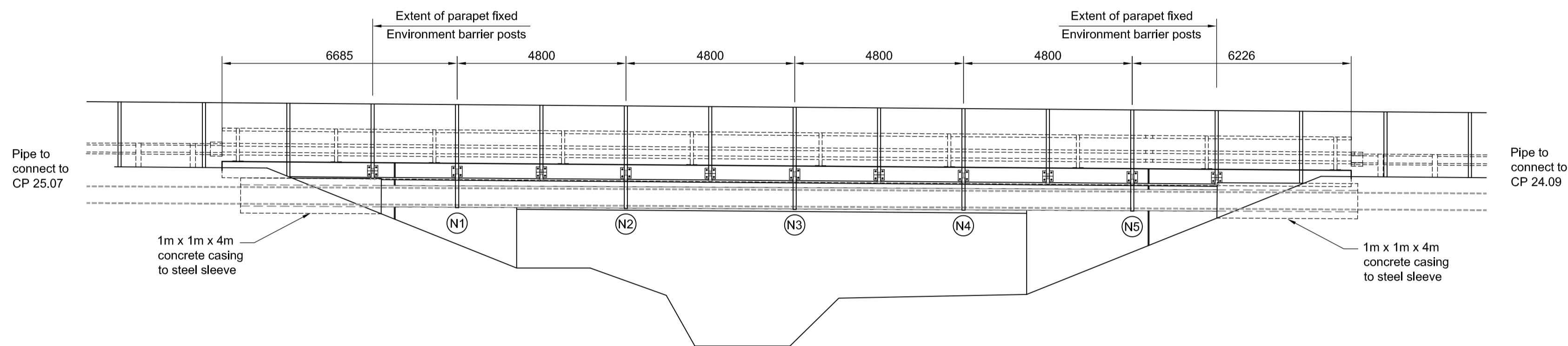
  

NORTH ELEVATION		
Strap No. (from E-W)	Dimension A (mm)	Dimension B (mm)
N1	950	330
N2	937	317
N3	924	304
N4	910	290
N5	897	277

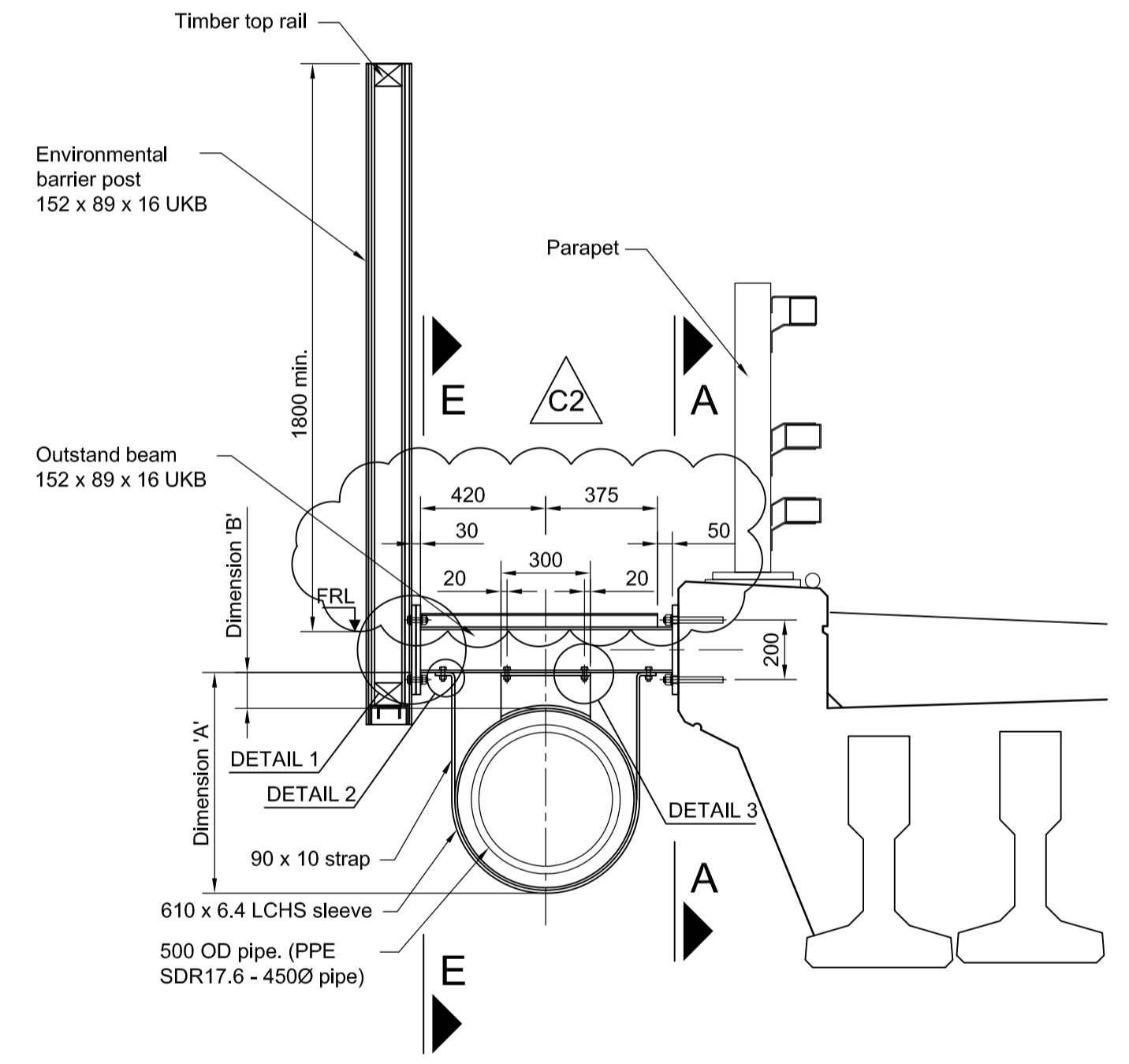
**TABLE OF PIPE SUPPORT STRAP DIMENSIONS**



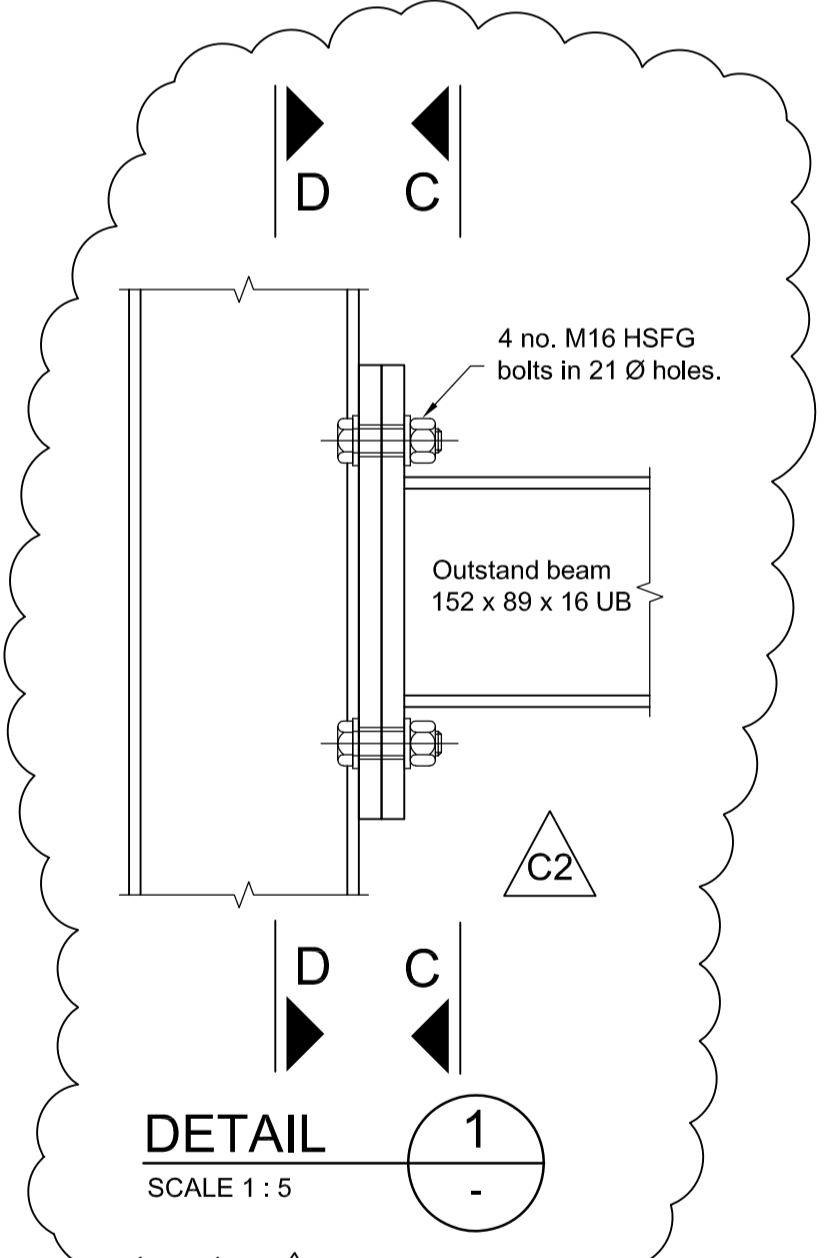
**SOUTH ELEVATION POWDERMILL STREAM**  
 SCALE 1:100



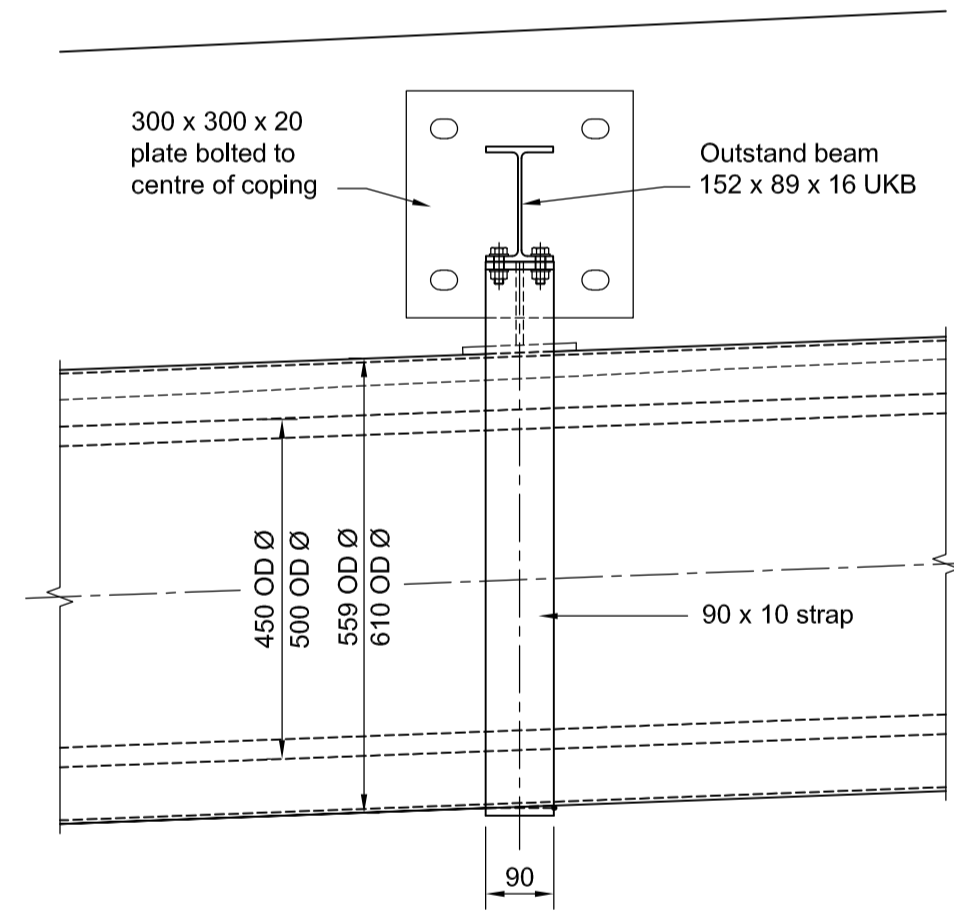
**NORTH ELEVATION POWDERMILL STREAM**  
 SCALE 1:100



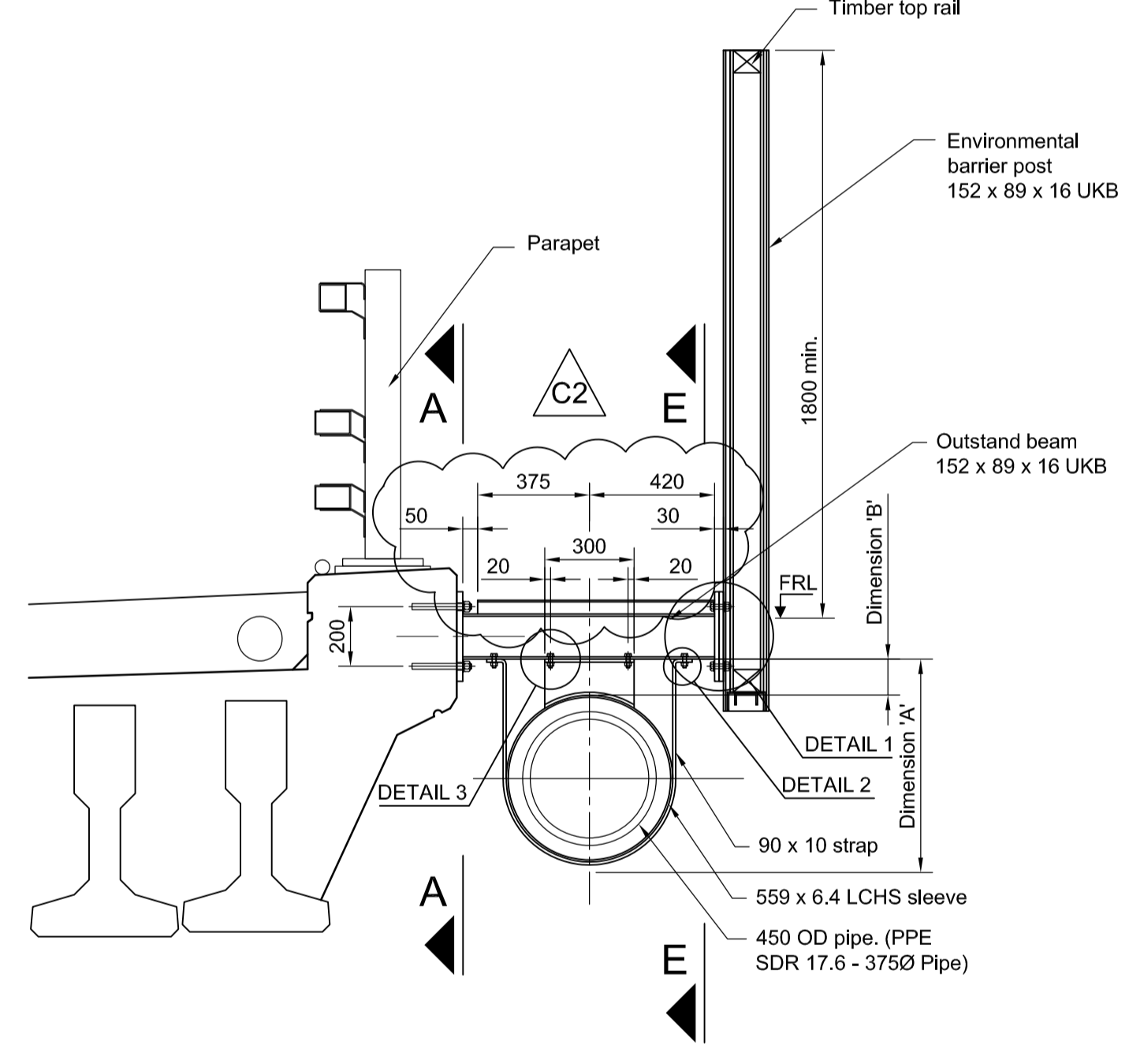
**SECTION THROUGH NORTH PARAPET**  
 SCALE 1:20



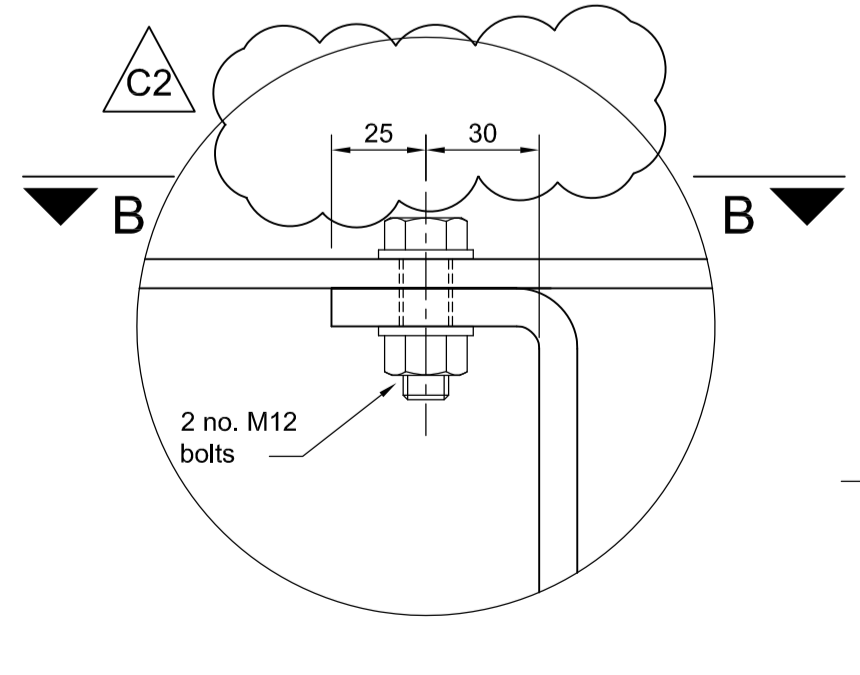
**DETAIL 1**  
 SCALE 1:5



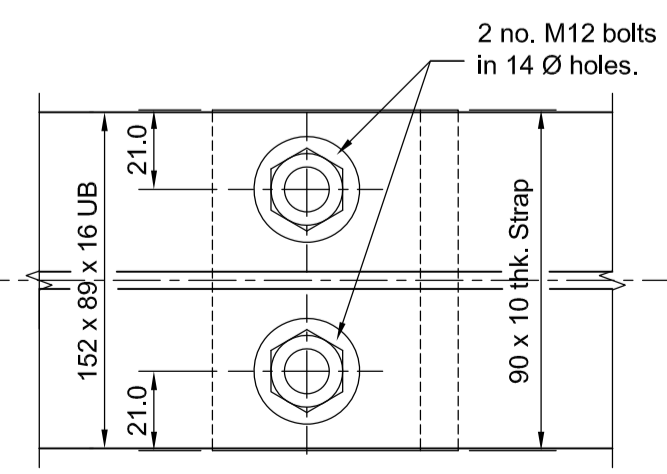
**SECTION E**  
 SCALE 1:10



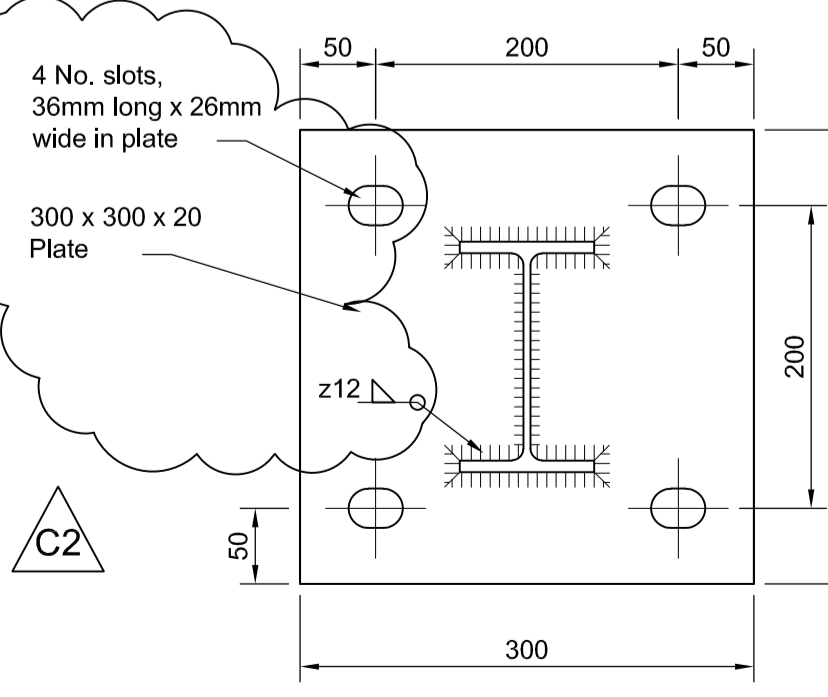
**SECTION THROUGH SOUTH PARAPET**  
 SCALE 1:20



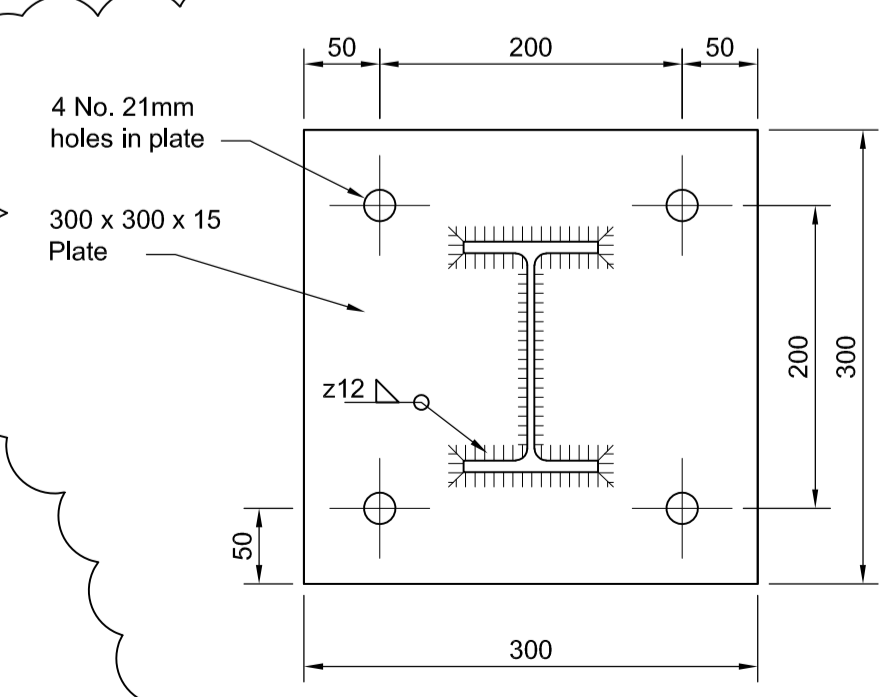
**DETAIL 2**  
 SCALE 1:2



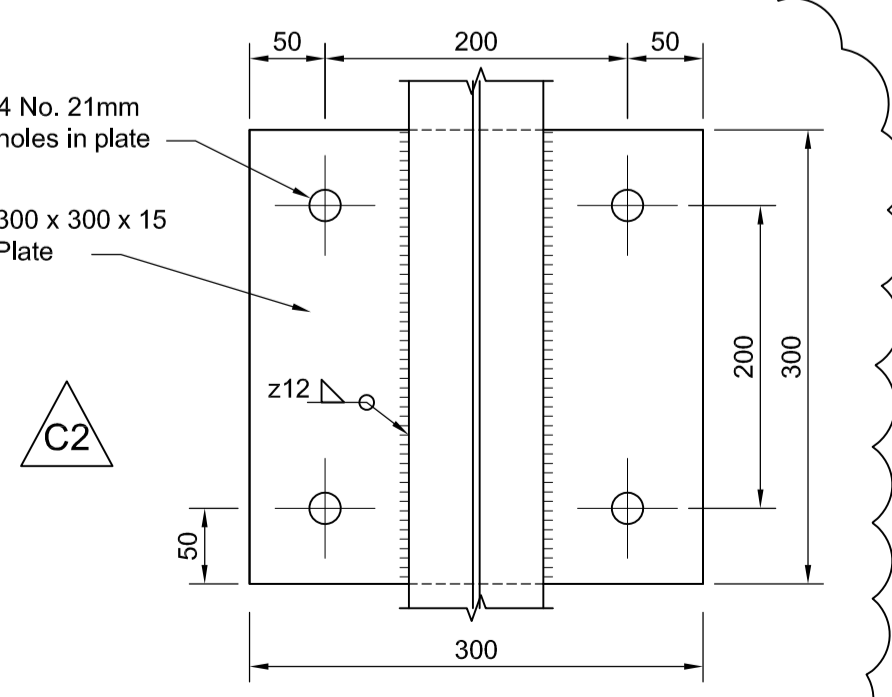
**SECTION B**  
 SCALE 1:2



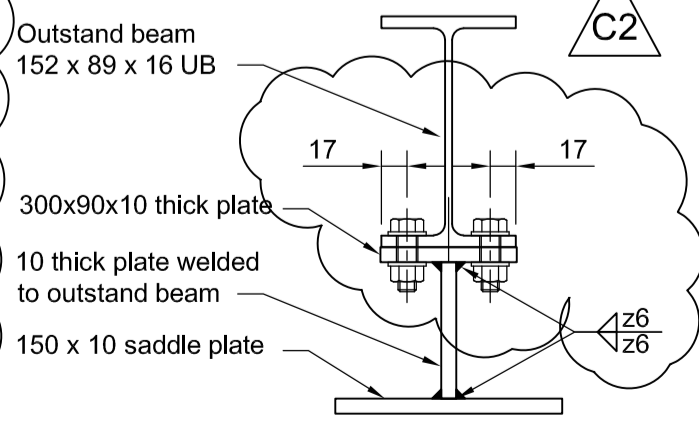
**SECTION A**  
 SCALE 1:5



**SECTION C**  
 SCALE 1:5



**SECTION D**  
 SCALE 1:5



**DETAIL 3**  
 SCALE 1:5

- NOTES**
- All dimensions in millimetres unless otherwise specified.
  - All levels in metres AOD (Above Ordnance Datum - Newlyn). All chainages in metres.
  - Steel section sizes are to be confirmed by the Environmental Barrier supplier. All steel to be S275J2 to BS EN 10025:2004 and painted in accordance with clause 2504.12 of the Specification of Highways Works.
  - For general environmental barrier notes & base plate anchorage system, refer to drawing B1297000-PH2/1600.01a/9902.
  - Open mesh floor to be galvanised mild steel with galvanised diamond patterned cover plate, clipped to the top flange of the outstand beams. Floor panels to be 790mm wide and length to suit environmental barrier post spacing (2400mm over bridge deck and wingwalls). Floor to be adequate for light industrial use: Live loading - 3kN/m<sup>2</sup>.
  - Pipe support (strap and saddle) at 4.8m spacings on both the North and South sides.
  - Base plates to be attached at the centre of parapet coping.

**KEY**  
 FRL: Finished Road Level

SAFETY, HEALTH AND ENVIRONMENTAL INFORMATION	
In addition to the hazards/risks normally associated with the types of work detailed on this drawing, note the following:	
CONSTRUCTION	
MAINTENANCE / CLEANING	
DECOMMISSIONING / DEMOLITION	
It is assumed that all works will be carried out by a competent contractor working, where appropriate, to an approved method statement	

Reproduction from the Ordnance Survey Map with the permission of the controller of Her Majesty's stationery office Crown copyright reserved Licence No. AL 100017326

Rev	Rev. Date	Purpose of revision	Drawn	Checked	Rev'd	Appr'd
C2	19/01/15	STEELWORK DETAILING AMENDED	GA	PB	PB	JP
C1	03/11/14	ISSUED FOR CONSTRUCTION	GA	PGD	PB	JP
C0	24/09/14	ISSUED FOR CONSTRUCTION	GA	PGD	PGD	JP

**JACOBS**

Simpson House, 6 Cherry Orchard Road, Croydon, Surrey, CR9 6BE  
 Tel: +44(0)208 666 8212 Fax: +44(0) 208 681 2499  
 www.jacobs.com

Client	Employer
<b>HOCHTIEF</b> INFRA CONSTRUCTION	<b>TAYLOR WOODROW</b> ecolSussex ecolSussex.gov.uk

Project **BEXHILL TO HASTINGS LINK ROAD**

Drawing title  
**BEXHILL TO HASTINGS LINK ROAD ENVIRONMENTAL BARRIERS S12 - POWDERMILL STREAM UNDERBRIDGE**

Drawing status **FOR CONSTRUCTION**

Scale	AS SHOWN @ 841X594	DO NOT SCALE
Jacobs No.	B1297000	

Drawing number **B1297000/PH2/1600.01A/9906** Rev **C2**

This drawing is not to be used in whole or part other than for the intended purpose and project as defined on this drawing. Refer to the contract for full terms and conditions.